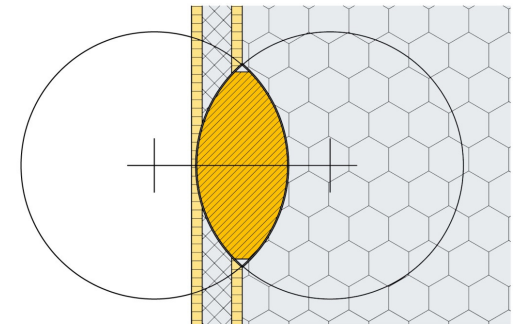
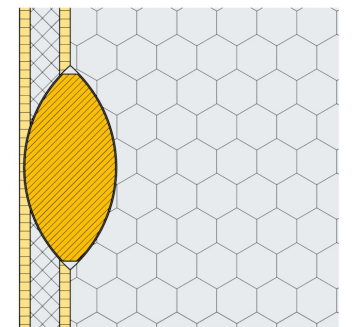
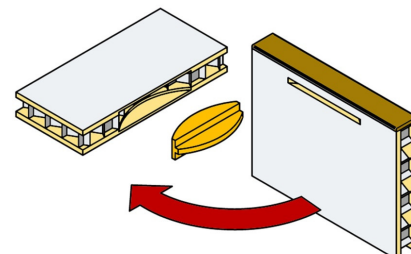
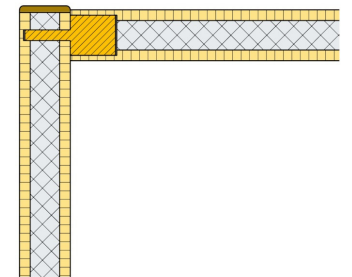
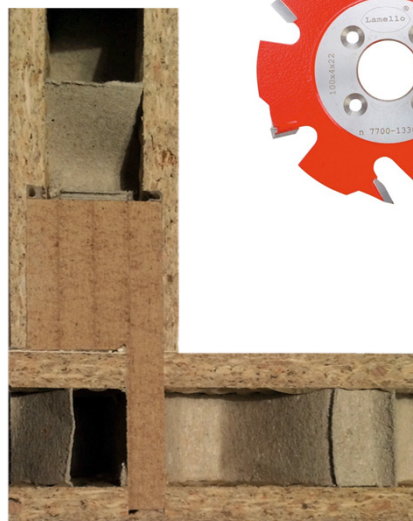


Forschung und Entwicklung im Möbelleichtbau

lllligeL
 Interessengemeinschaft Leichtbau e. V.

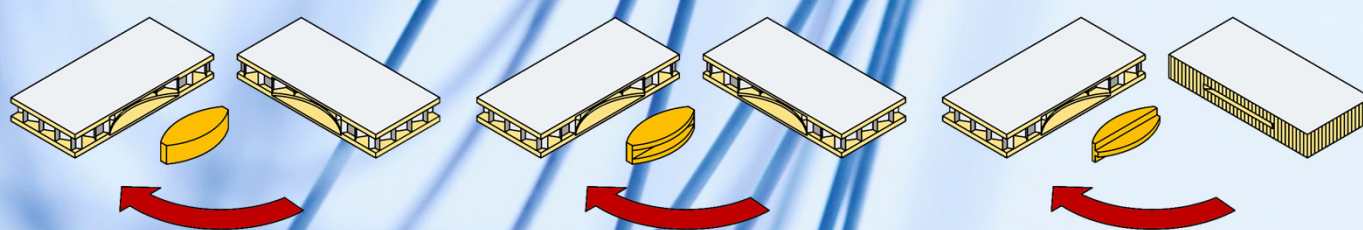
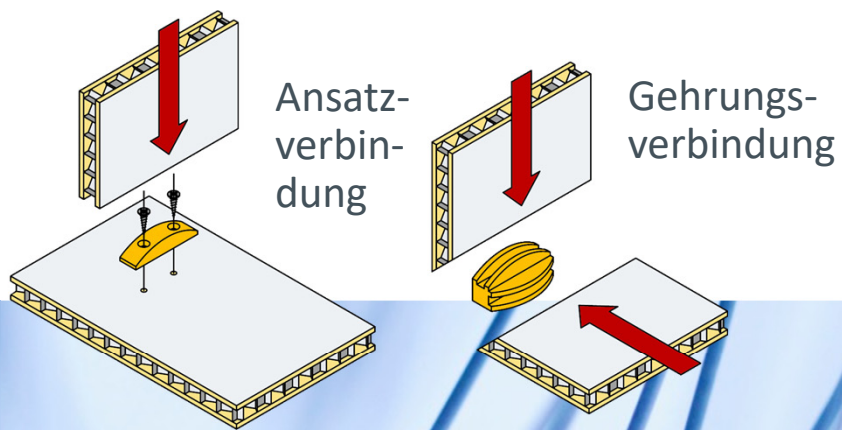


GO-FAST
 LEMGO.FASTENER

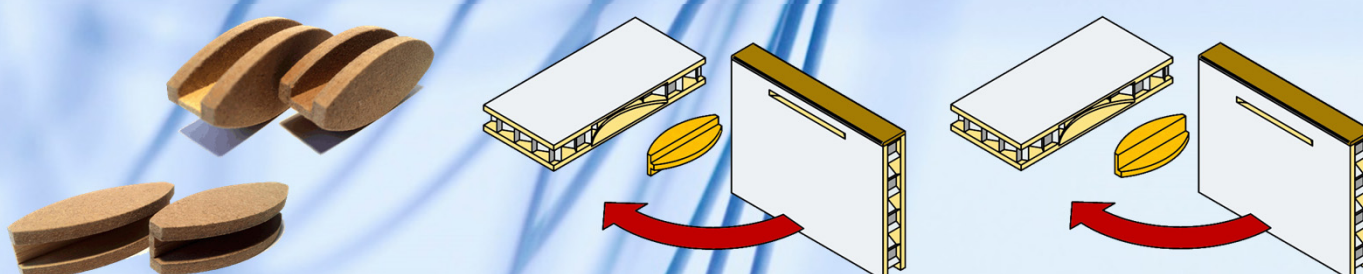


WOOD-SPRING®-Technologie
 Patentanmeldung der TH OWL

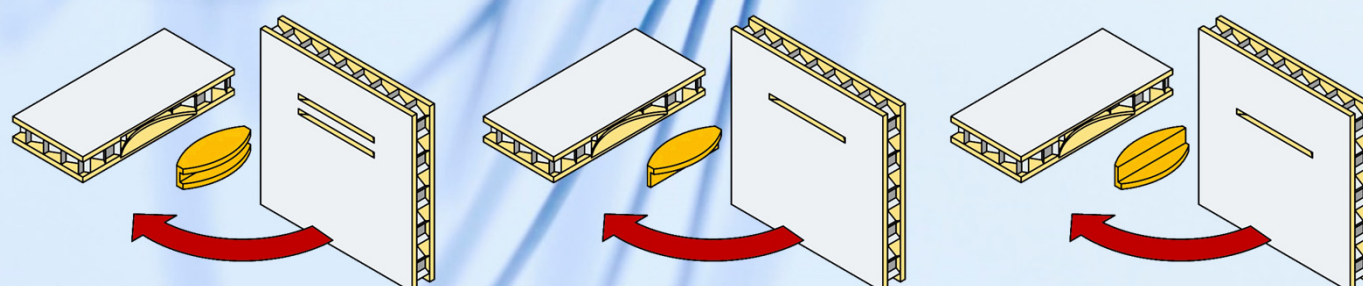
GO-FAST® und WOOD-SPRING® sind eingetragene Marken der TH OWL



ebene Flächenverbindungen von Wabenplatten untereinander oder mit klassischen Holzwerkstoffen



winkelförmige Flächeneckverbindungen von Wabenplatten & Co.



T-förmige Flächeneckverbindungen von Wabenplatten & Co.