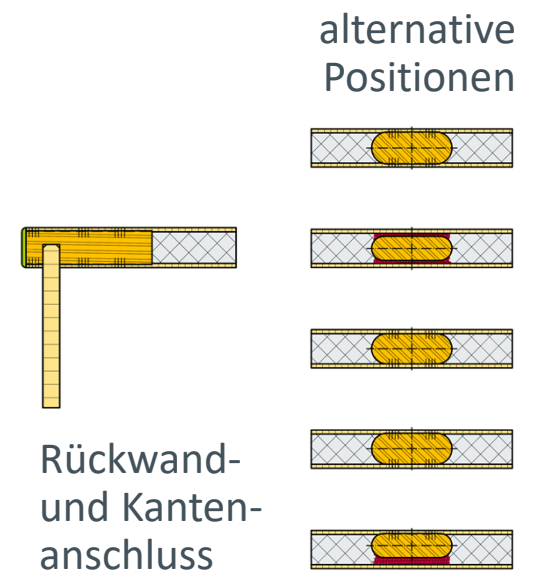
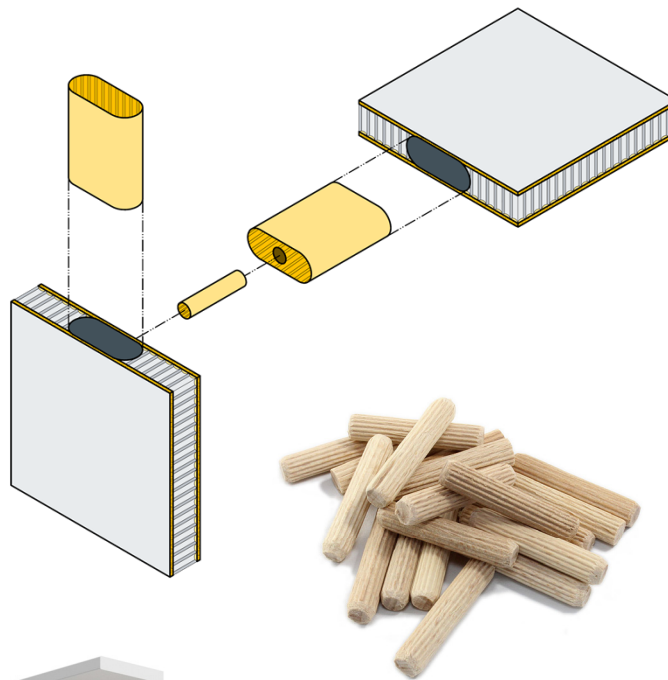
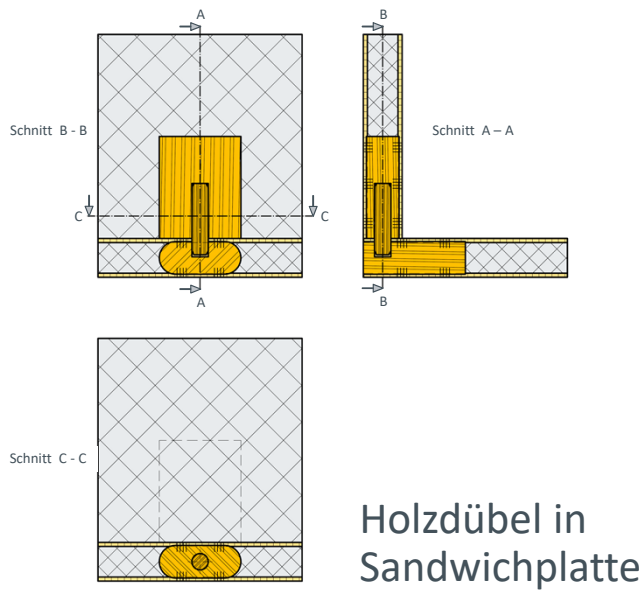
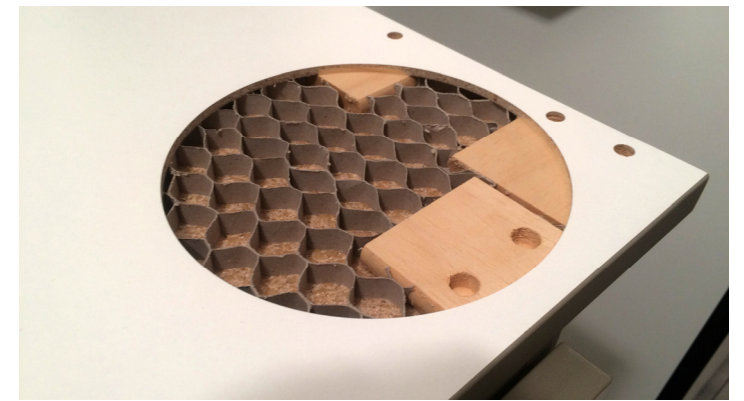


Forschung und Entwicklung im Möbelleichtbau

lllligeL
Interessengemeinschaft Leichtbau e. V.

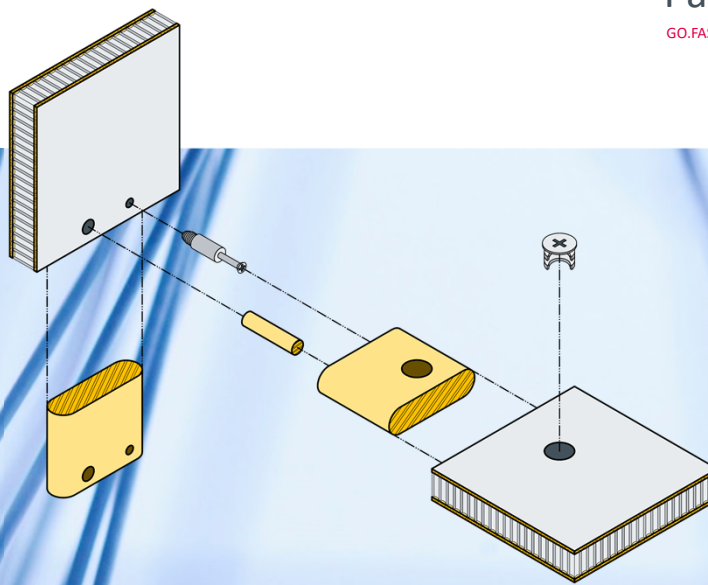
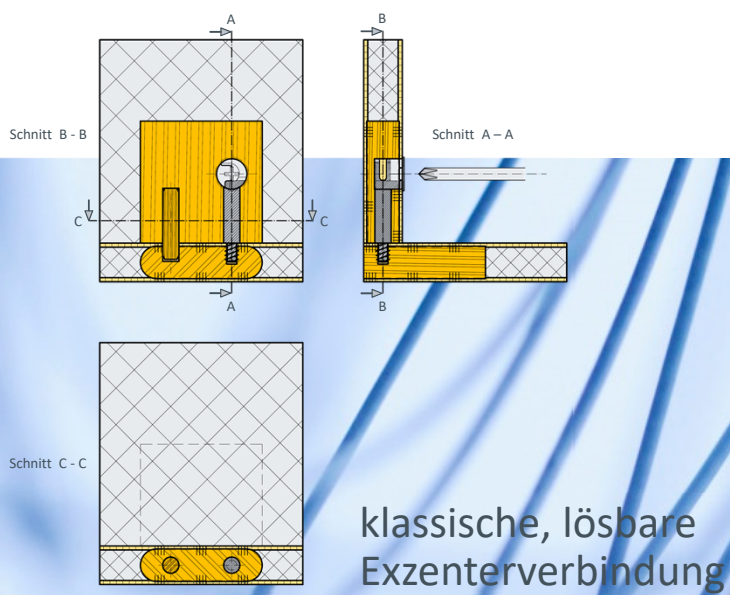


GO FAST
LEMGO.FASTENER



WOOD-INSERT®-Technologie
Patentanmeldung der TH OWL

GO.FAST® und WOOD-INSERT® sind eingetragene Marken der TH OWL



alternative Querschnitte

